



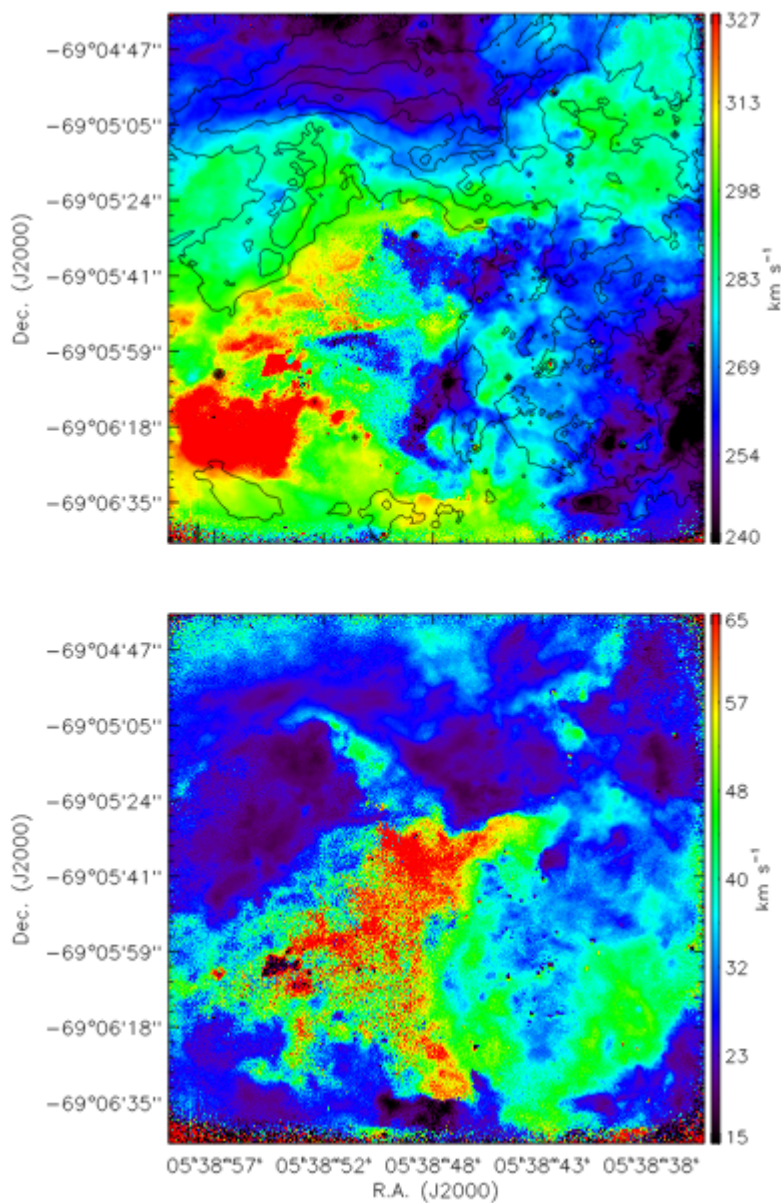
Published on SOAR (<http://www.ctio.noirlab.edu/soar>)

[Home](#) > SAM Fabry-Perot Call for Proposals

SAM Fabry-Perot Call for Proposals

Submitted by jalias on Thu, 2017-11-09 12:21

We will be supporting a 4-night run with the Fabry-Perot mode of SAM in mid-February 2018. This will be similar to the previous two campaigns with this mode. Interested scientists will find details on the capability being offered, and on how to request time, [here](#). ^[1]



Radial and dispersion velocity maps of 30 Doradus.

Top: Velocity field. The scale is shown in km/s. Contours correspond to the following flux levels: 8×10^{-16} , 2×10^{-15} , 5×10^{-15} , 8×10^{-15} erg/s/cm²

Bottom: Velocity dispersion map. The scale is shown in km/s. The map was corrected by instrumental and thermal widths.

(Adapted from Fig.3 of Mendes de Oliveira et al. 2017, MNRAS, 469, 3424)

Source URL: <http://www.ctio.noirlab.edu/soar/content/sam-fabry-perot-call-proposals>

Links

[1] <http://www.ctio.noirlab.edu/soar/content/sam-fp>