

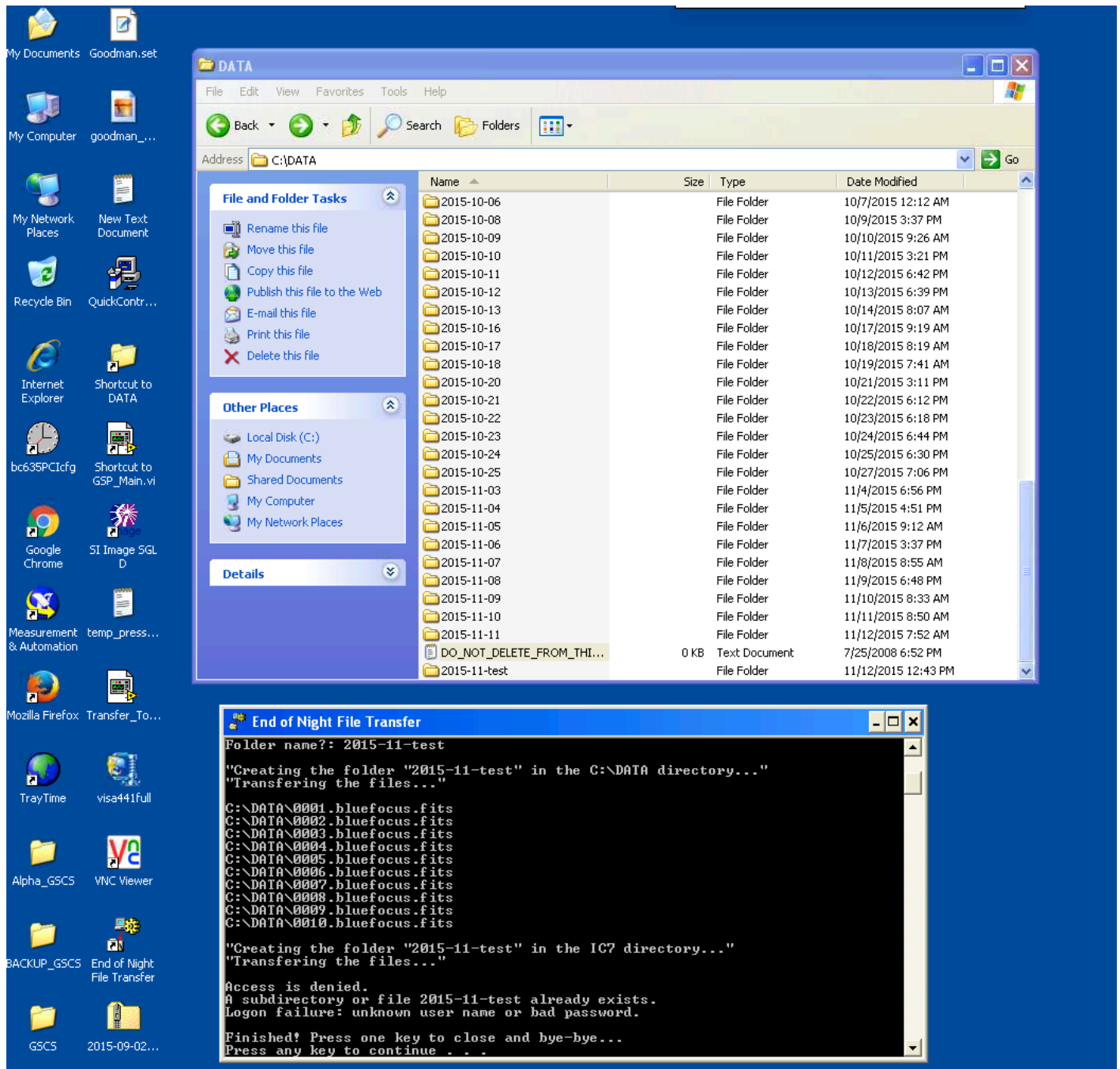
Published on SOAR (<http://www.ctio.noirlab.edu/soar>)

[Home](#) > GHTS Troubleshooting 2

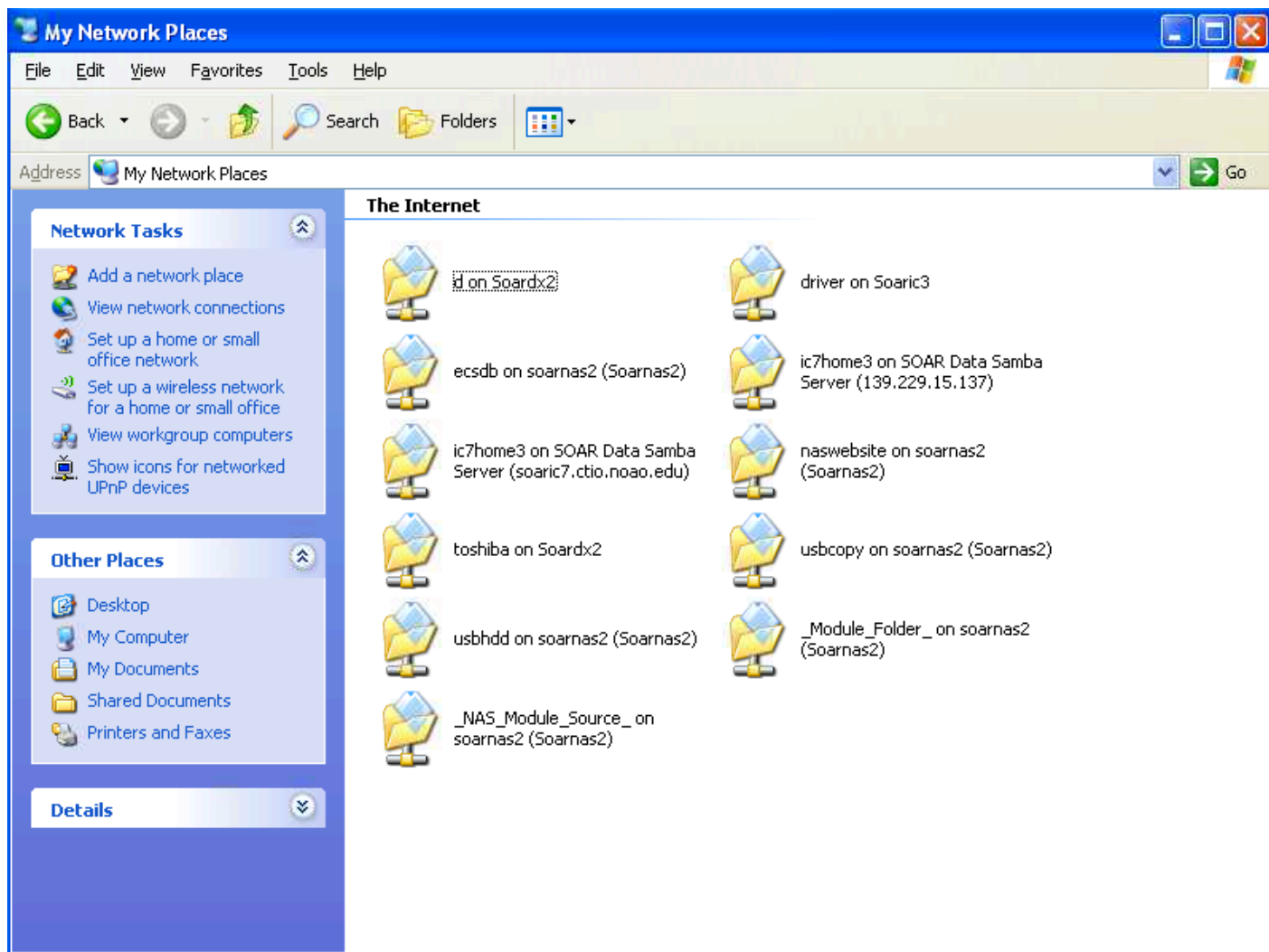
---

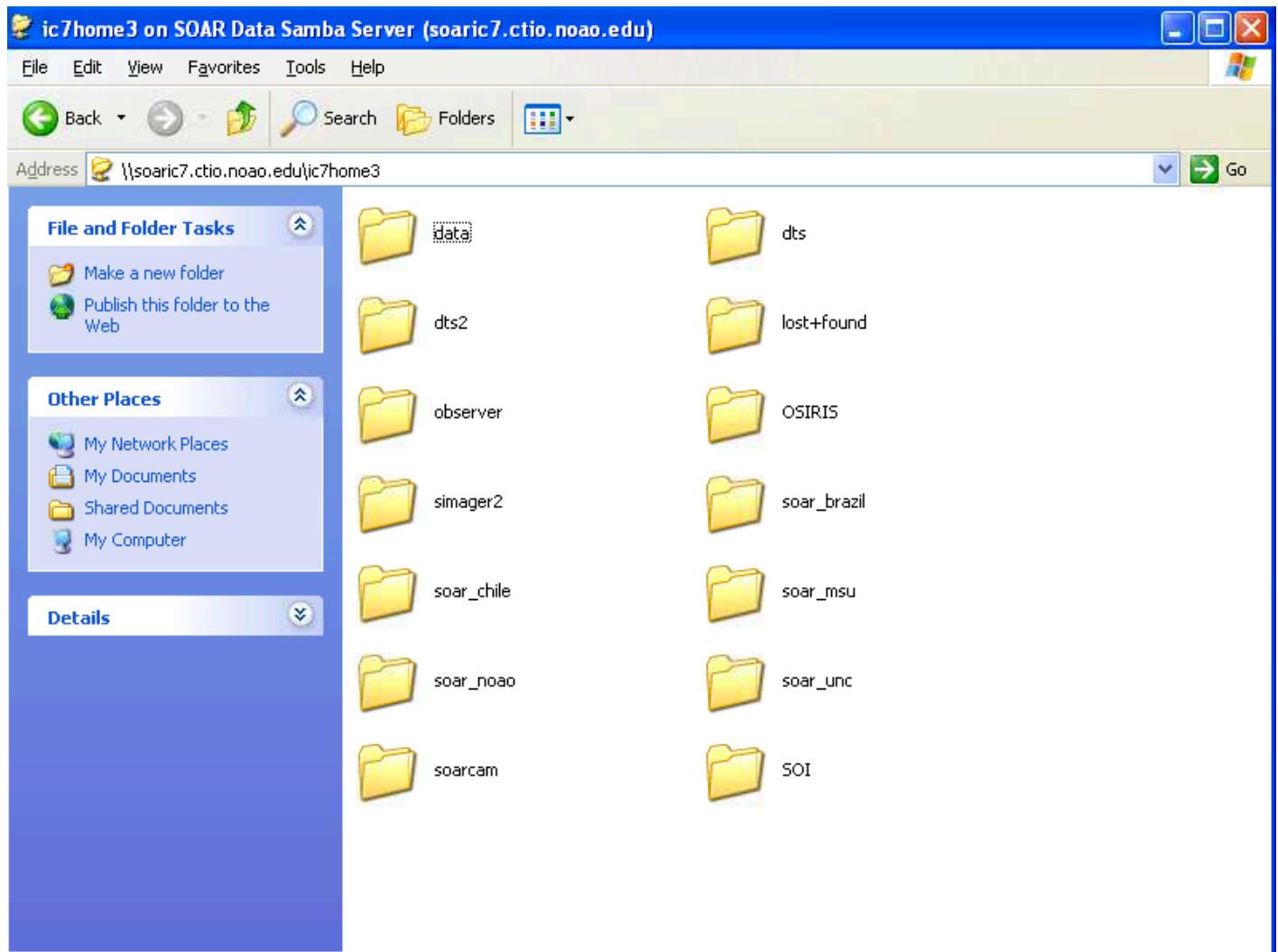
## GHTS Troubleshooting 2

**The End-of-Night transfer program does not create the appropriate directory in `soaric7:/home3/observer/GOODMAN_DATA/<institution>/` were `<institution>` is one of BRAZIL, CHILE, MSU, NOAO, OTHER or UNC, and transfer files:**



**Solution:** This is caused by the Samba server not running. Click on "My Network Places" and then double click on each of the two Samba shares: ic7home3 on soaric7.ctio.noao.edu and on 139.229.15.137. If the Samba share is available you will see the various folders displayed as shown below:





otherwise you will get a small window prompting you for a user name and password. Provide the appropriate credentials and this will activate the Samba share. Now you will see the folders as above. Once both Samba shares are running and visible, the End-of-Night file transfer should work correctly.

---

**Source URL:** <http://www.ctio.noirlab.edu/soar/content/ghts-troubleshooting-2>