

Published on SOAR (<http://www.ctio.noirlab.edu/soar>)

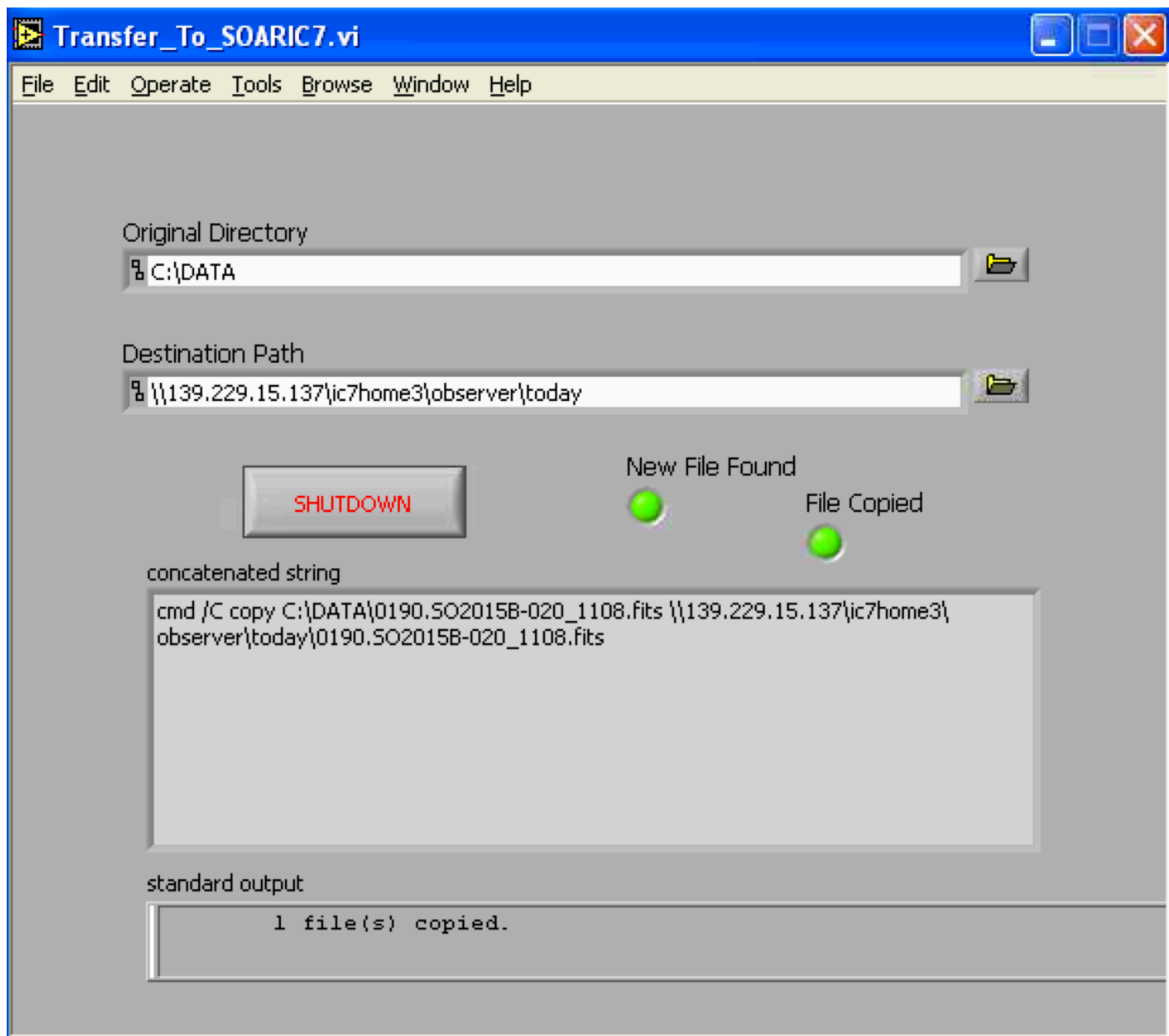
[Home](#) > GHTS Troubleshooting 1

GHTS Troubleshooting 1

The Goodman GUI works fine and images are created in C:\DATA in soaric4, but are not transfered to /home3/observer/today/.

Solution: Check that the Transfer-to-soaric7 LabView application in the Windows desktop of soaric4 is up and running:





Source URL: <http://www.ctio.noirlab.edu/soar/content/ghts-troubleshooting-1>