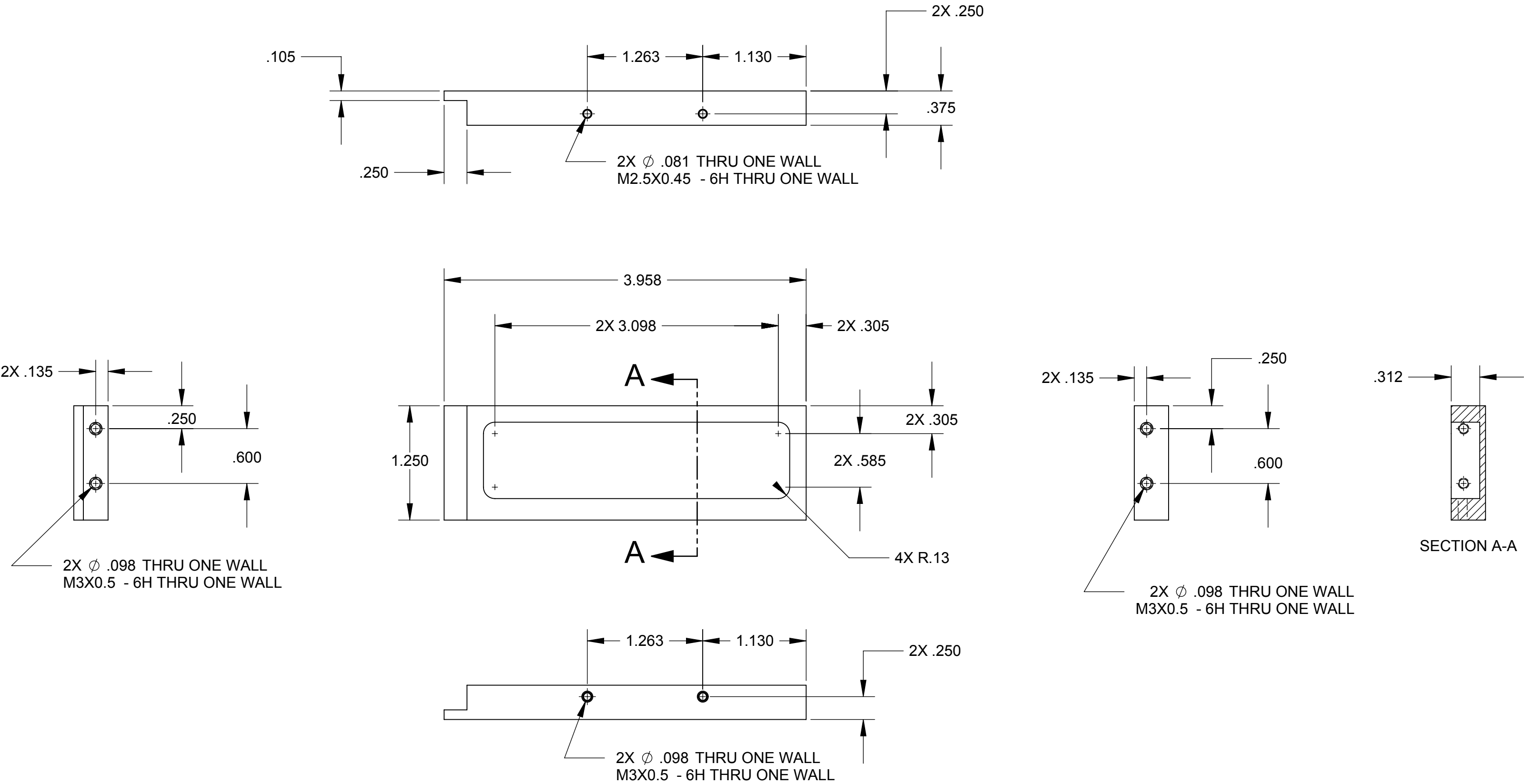


NOTES:

1. DIMENSIONS IN INCHES.
2. BREAK EDGES .02 MAX.
3. ELECTROLESS NICKEL PLATE PER ASTM B733-04 TYPE V (10% MIN PHOSPHORUS), SC1 (.0002" THK), CLASS 4.

	B	2X M2.5 WAS 2X M3	JD	1/14/2011	
	A	2X M3 WAS 2X M4	JD	10/12/2010	
	-	INITIAL RELEASE	JD	7/12/2010	
ZONE	REV	DESCRIPTION	BY	DATE	APV BY
REVISIONS					

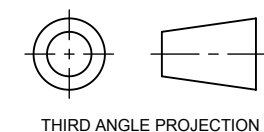


MATERIAL : ALUMINUM ALLOY 6061-T6

TOLERANCES UNLESS
OTHERWISE NOTED

.XX ±.01
.XXX ±.005

ANGULAR
±.1°



THIRD ANGLE PROJECTION

NATIONAL OPTICAL ASTRONOMY OBSERVATORIES
OPERATED BY THE
ASSOCIATION OF UNIVERSITIES FOR RESEARCH IN ASTRONOMY
UNDER COOPERATIVE AGREEMENT WITH
NATIONAL SCIENCE FOUNDATION

DO NOT SCALE DRAWING

NEXT ASSEMBLY

TRNT-EL-02-0006

NAME

TRANSITION MODULE
SIDE PLATE, RIGHT

USED ON

TORRENT

DWG SIZE

C

REV

B

SCALE: 1:1

DWG PRODUCED USING
SOLIDWORKS
2010

DESIGNED BY:

RATH / DeVRIES

CHECKED BY:

XXX

DRAWN BY:

XXX

APPROVED BY:

XXX

DRAWING NUMBER

TRNT-EL-02-1026

RELEASE DATE:

SHEET: 1 OF 1

-1

ITEM WEIGHT (Lbs)

CALCULATED WEIGHT