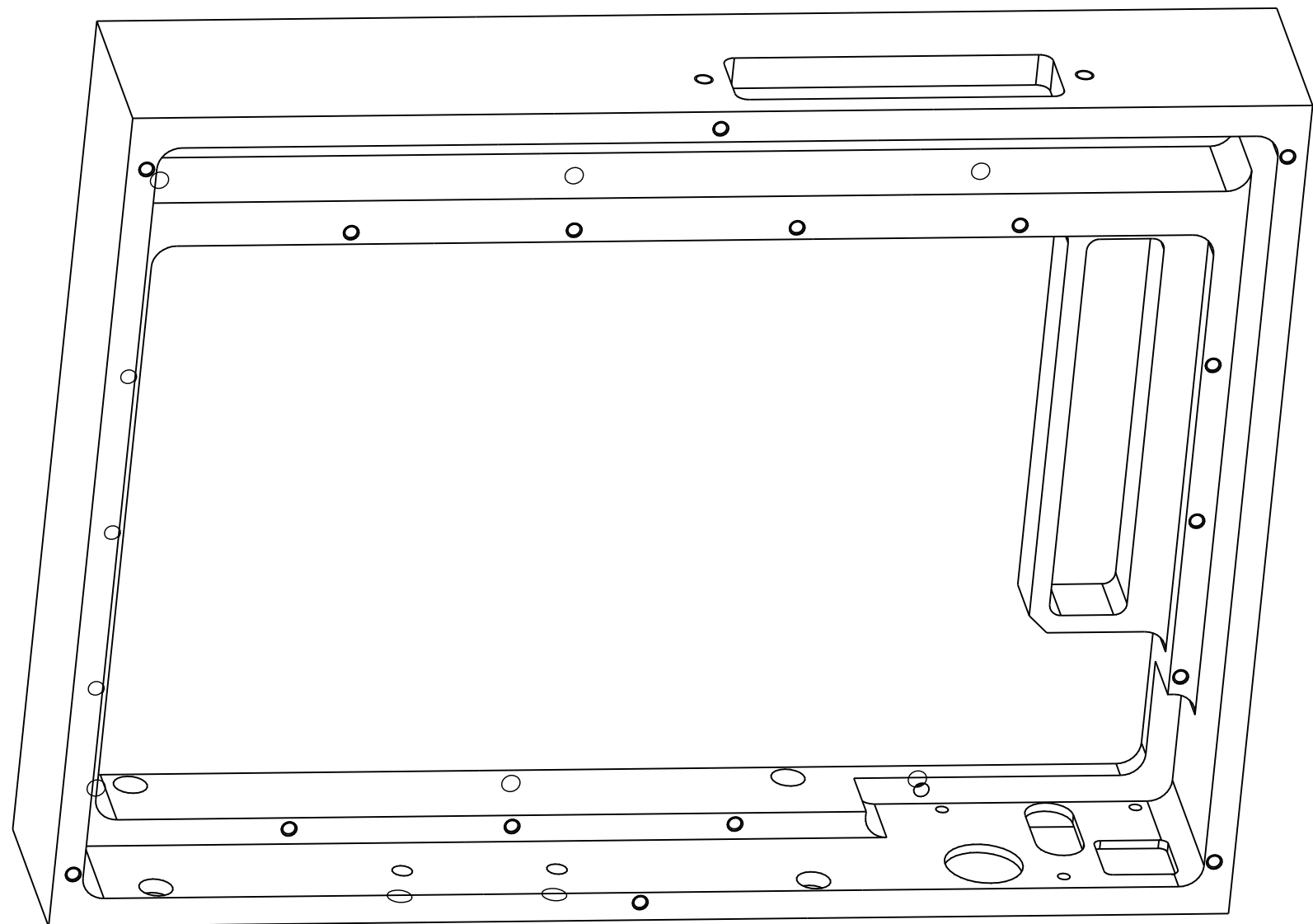
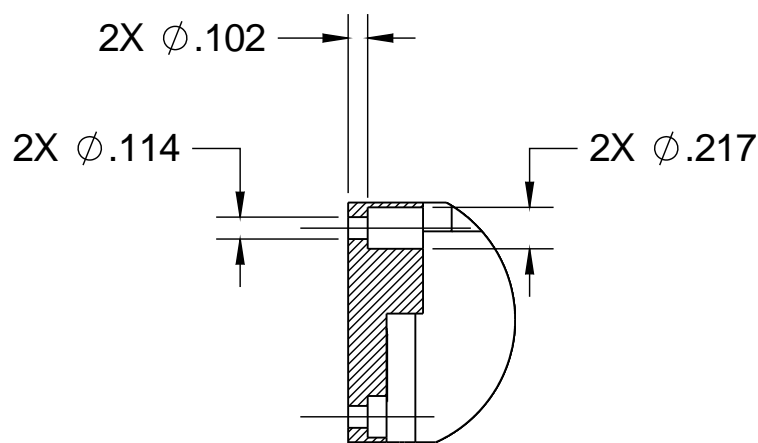
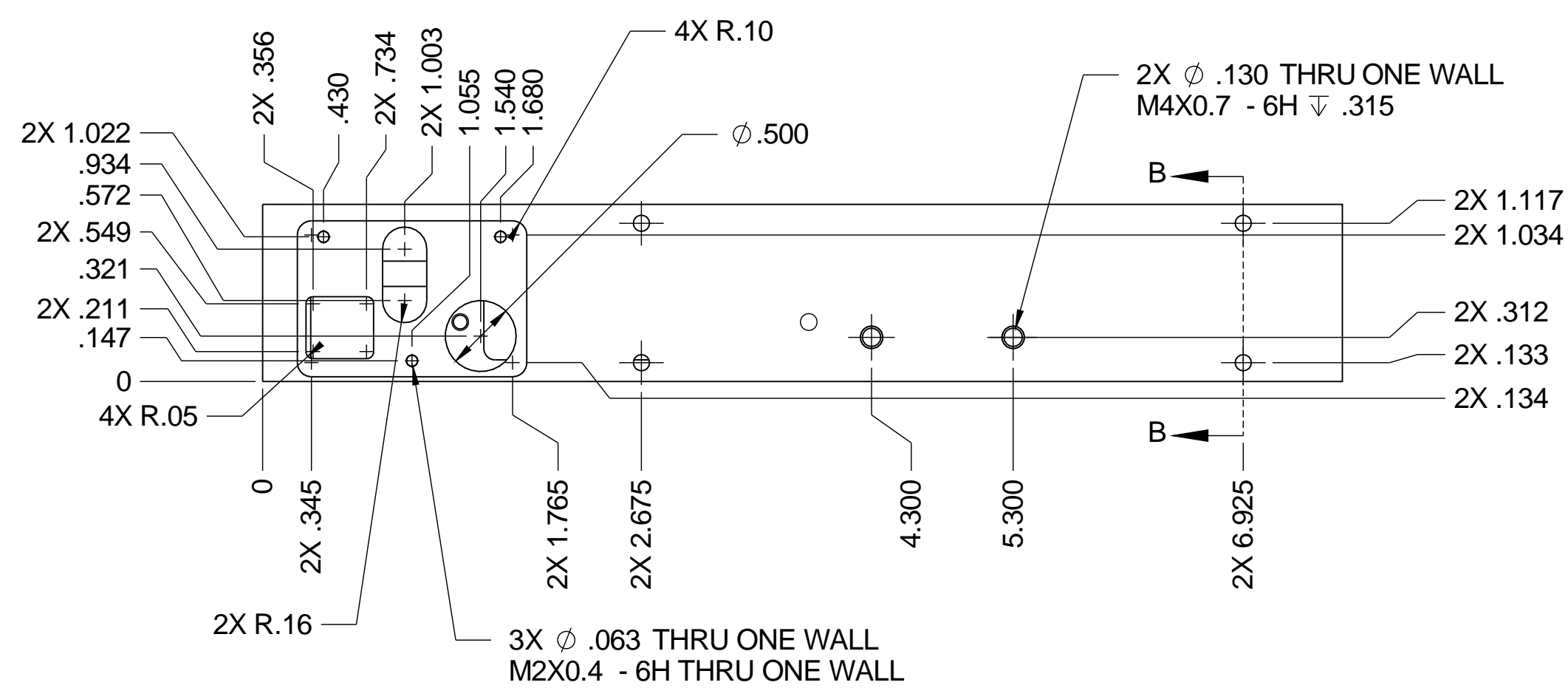
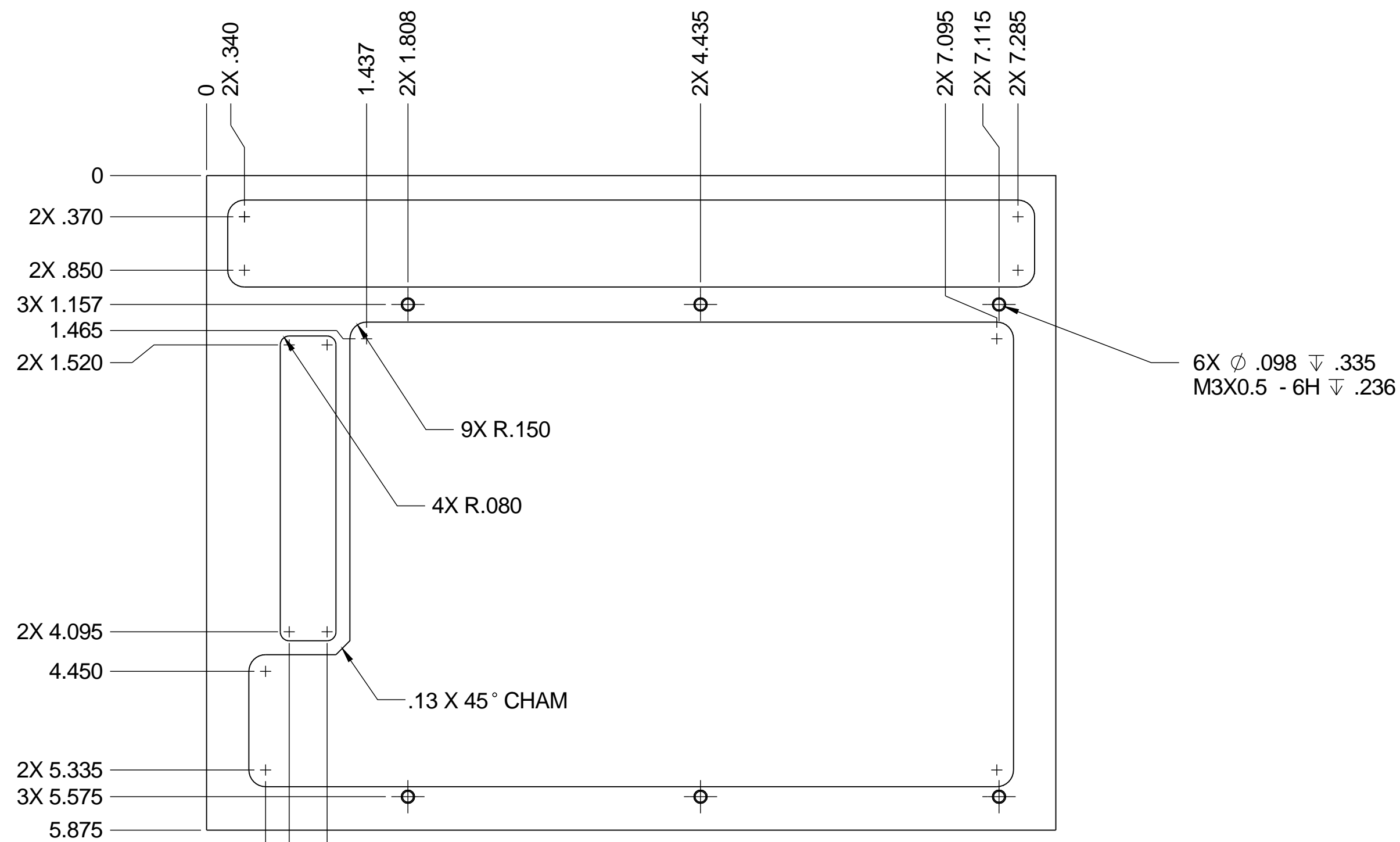
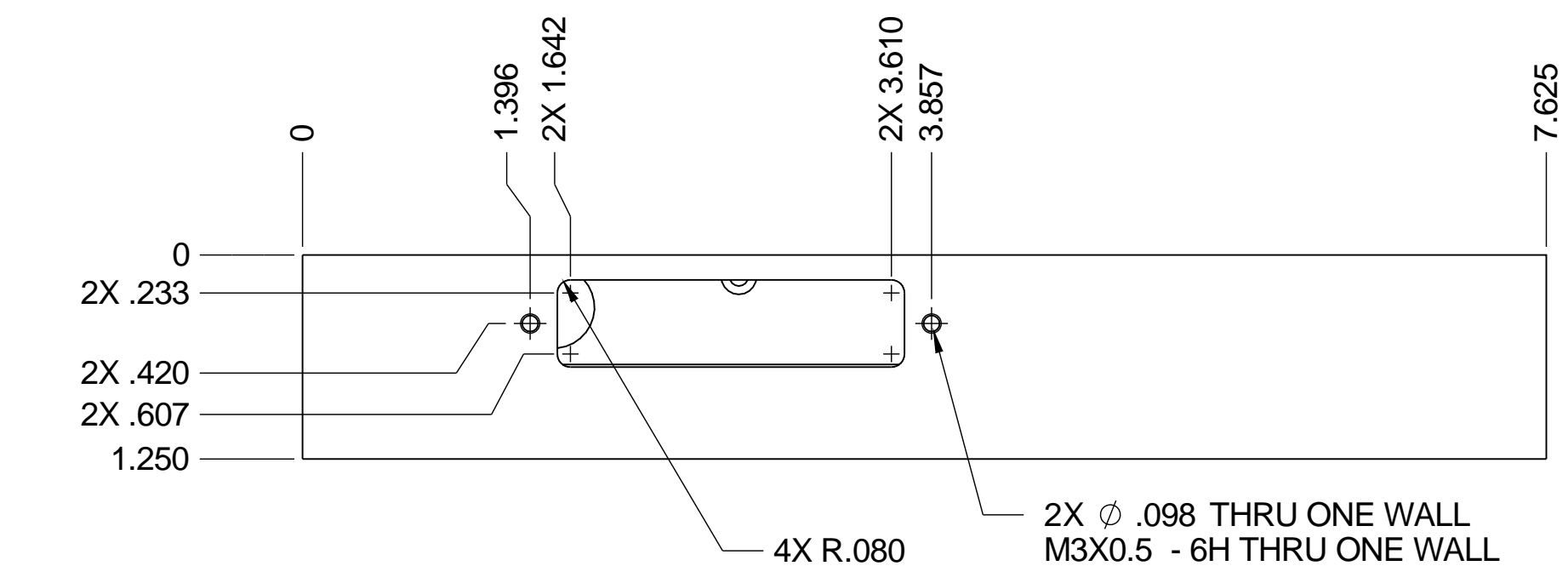


1. DIMENSIONS IN INCHES.
2. BREAK EDGES .02 MAX.
3. ELECTROLESS NICKEL PLATE PER ASTM B733-04 TYPE V (10% MIN PHOSPHORUS), SC1 (.0002" THK), CLASS 4.

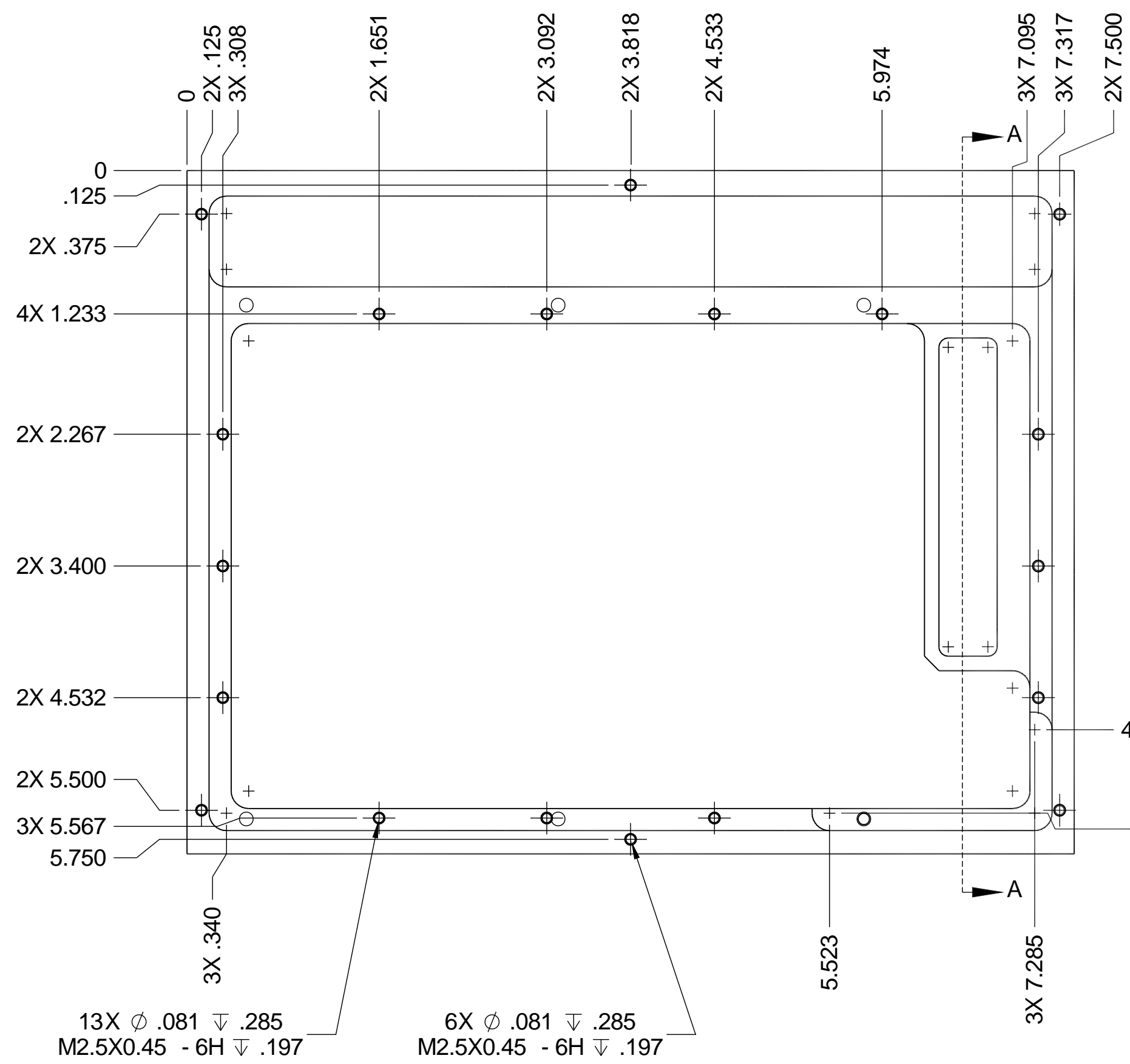
	B	1.117 WAS 1.125, .133 WAS .125	JD	1/14/2011	
	A	.356 WAS .389, .734 WAS .701, .549 WAS .536, .211 WAS .224, .050 WAS .06	JD	1/6/2011	
	-	INITIAL RELEASE	JD	7/12/2010	
ZONE	REV	DESCRIPTION	BY	DATE	APV BY
REVISIONS					



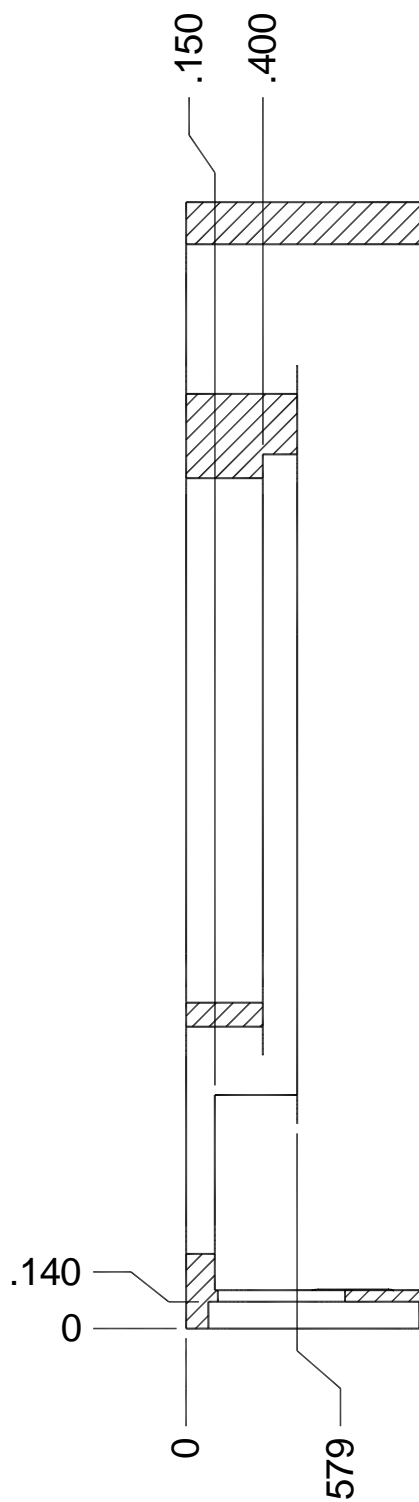
REFERENCE VIEW ONLY

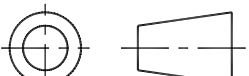


SECTION B-B  
2 PLACES



SECTION A-A



MATERIAL :ALUMINUM ALLOY 6061-T6									
TOLERANCES UNLESS OTHERWISE NOTED  .XX ±.01      ANGULAR ±.1° XXX ±.005			 THIRD ANGLE PROJECTION		NATIONAL SOLAR OBSERVATORY <small>OPERATED BY THE</small> ASSOCIATION OF UNIVERSITIES FOR RESEARCH IN ASTRONOMY <small>UNDER COOPERATIVE AGREEMENT WITH</small> NATIONAL SCIENCE FOUNDATION				
DO NOT SCALE DRAWING			NAME			USED ON			
NEXT ASSEMBLY						<i><b>TORRENT</b></i>			
TRNT-EL-02-0004			PSM ENCLOSURE BASE			DWG SIZE		REV	
						<b>D</b>		<b>B</b>	
SCALE: 1:1		DESIGNED BY:		CHECKED BY:		DRAWING NUMBER			
DWG PRODUCED USING		RATH / DeVRIES		XXX		TRNT-EL-02-1010			
SOLIDWORKS 2010		DRAWN BY:		APPROVED BY:		RELEASE DATE:		SHEET: 1 OF 1	
		S. RATH		XXX		XX/XX/XX			

-1	
ITEM	WEIGHT (Lbs)
CALCULATED WEIGHT	